

PRE-FILTER FITTING INSTRUCTIONS

LANDCRUISER 200 SERIES V8 LANDCRUISER 70 SERIES V8 (Single Battery)

IMPORTANT – BEFORE STARTING

- NOTE If the 70 Series Landcruiser has a second battery mounted behind the original fuel filter (between the filter and the firewall), the alternate 70 Series Landcruiser kit DT-FMK006 should be used.

- Ensure the engine bay is clean and free from contaminants.

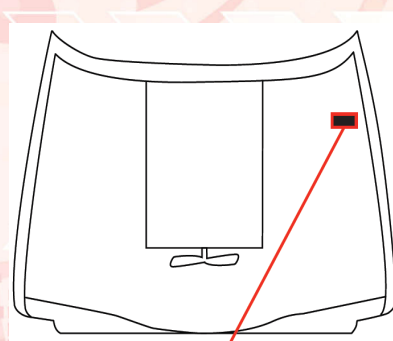
- The Fuel Manager unit has arrows which indicate flow located under the ports.

- Install all fittings and plugs into the filter assembly using a suitable thread paste such as Threebond1110B.



KIT CONTENTS

1. Fuel Manager 30 micron Filtration Unit
2. Mounting Bolts, Washers and Nuts
3. Fuel Hose 1m ½ Inch
4. Drivetech 4x4 Filter Bracket
5. Straight Barb Fittings ½ Inch
6. Blanking Plugs
7. Hose Clamps



FUEL MANAGER[®]

FITTING INSTRUCTIONS

1. Remove inlet hose from original filter.
2. Remove the two (2) retaining nuts on top of the factory filter.
3. Install the Drivetech 4x4 bracket below the original filter and refit the retaining nuts.
4. Install all fittings and plugs into the filter assembly using suitable thread paste sealant such as Threebond 1110B.
5. Mount Fuel Manager filter assembly on to the bracket.
6. Connect the inlet side of the final original filter to the outlet of the Fuel Manager filter.
7. Fit the supply fuel line to the inlet of the Fuel Manager.
8. Reconnect outlet pipe of the factory filter to the inlet of the common rail supply pump.
9. Ensure all fuel lines are suitably secured.
10. Prime the system using the hand primer on the factory filter. When the primer goes firm start the engine.