

PRE-FILTER FITTING INSTRUCTIONS

NISSAN NAVARA D40 2.5L NON DPF

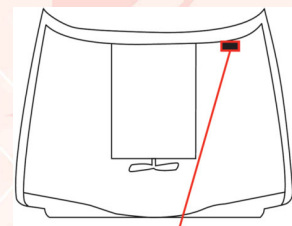
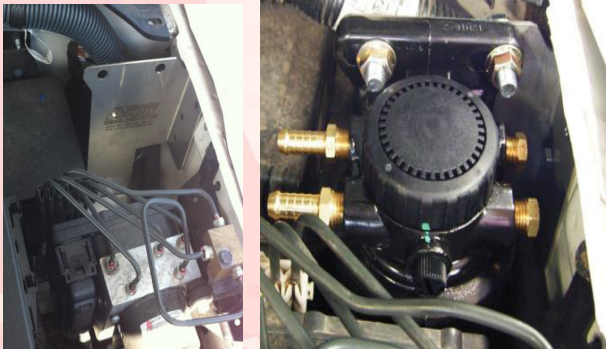
IMPORTANT – BEFORE STARTING

- This kit suits all manual Navara D40 with VIN numbers starting with V.
- Ensure the engine bay is clean and free from contaminants.
- The Fuel Manager unit has arrows which indicate flow located under the ports.
- Install all fittings and plugs into the filter assembly using a suitable thread paste such as Threebond1110B. DO NOT use thread tape as this can lead to air leaks.



KIT CONTENTS

1. Fuel Manager 30 micron Filtration Unit
2. Mounting Bolts, Washers and Nyloc Nuts
3. Fuel Hose 4m 3/8 Inch
4. Drivetech 4x4 Filter Bracket
5. Straight Barbed Fittings 3/8 Inch
6. Blanking Plugs
7. Hose Clamps
8. Mounting Bolts 6mm



FITTING INSTRUCTIONS

1. The Fuel Manager bracket goes between the ABS control unit and the engine fuse box on the passenger side of the engine bay. Remove the bolt in the fuse box closest to the passenger mud guard. Sit the bracket on top of the fuse box and insert a new 6mm bolt. Insert the remaining three bolts through the bracket to the inner guard.
2. Install the tail fittings to the left hand side of the Fuel Manager and the plugs on the right using a sealing past such as Threebond 1110B.
3. Mount the Fuel Manager to the bracket.
4. Connect the fuel hose to the inlet of the Fuel Manager using a hose clamp. Run the Fuel line along the firewall and connect the other end to the metal fuel line from the tank.
5. Connect another section of hose from the outlet of the Fuel Manager to the inlet of the OE filter housing. Ensure all fuel lines are correctly secured.
6. Pump the hand primer until it goes firm, the fuel system is now bled and the engine is ready to start.
7. Check whole system for leaks.